

GLASS BEADS

Polished glass beads made of soda lime glass | 0.25–0.50 mm

📍 IWF, Austrian Academy of Sciences, Austria



SHORT DESCRIPTION

SiLibeads Type S glass beads from the company Sigmund Lindner are produced in special thermal forming processes. The quality attributes of those beads are high roundness ($d_{min}/d_{max} \geq 0.95$), clean and polished surfaces and low process residues and other impurities. Figure 1 shows a symbolic image of SiLibeads Type S glass beads. In Figure 2 the grain size of the beads can be seen. The dark color of the spheres is due to illumination conditions.

MAIN PROPERTIES

Grain Size (Distribution):	0.25–0.50 mm
Purity:	> 97.5%
Material Density:	2500 kgm ⁻³
Hardness:	≥ 6 Mohs scale
Volatility/Condensability:	solid
Thermal Conductivity:	1.129 Wm ⁻¹ K ⁻¹
Refractive Index:	1.5188
Electric Permittivity:	N/A

REFERENCES

- [1] Sigmund Lindner GmbH. *SiLibeads Glass Beads, Type S*. 2019. URL: <https://www.sigmund-lindner.com/en/products/glass-beads/dispersing-beads/> (visited on 10/29/2019).

ADDITIONAL IMAGES AND GRAPHS

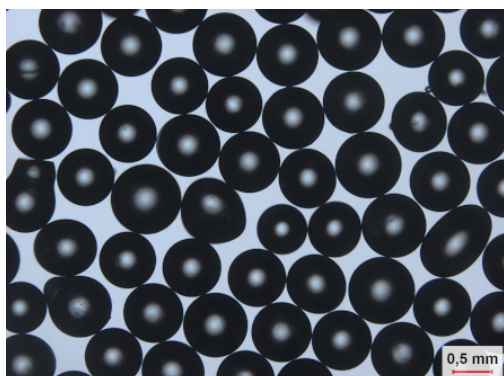


Figure 2: Glass beads (0.25–0.50 mm)

MATERIAL IMAGE



Figure 1: SiLibeads Type S glass beads [1]

PRODUCTION INFO

🏭	Producer	Sigmund Lindner
🕒	Production rate	N/A
🏪	Purchase	N/A

PROS & CONS

Cost	● ● ● ● ● ● ● ● ● ●
Availability	● ● ● ● ● ● ● ● ● ●
Production time	● ● ● ● ● ● ● ● ● ●

HAZARDS

Non hazardous substance.

CONTACT PERSON

Dr. Günter Kargl

✉ guenter.kargl@oeaw.ac.at

🏠 Austrian Academy of Sciences/IWF
Schmiedlstraße 6
A-8042 Graz