

# GLASS BEADS

Polished glass beads made of soda lime glass | 1.00–1.25 mm

📍 IWF, Austrian Academy of Sciences, Austria



## SHORT DESCRIPTION

SiLibeads Type S glass beads from the company Sigmund Lindner are produced in special thermal forming processes. The quality attributes of those beads are high roundness ( $d_{min}/d_{max} \geq 0.95$ ), clean and polished surfaces and low process residues and other impurities. Figure 1 shows a symbolic image of SiLibeads Type S glass beads. In Figure 2 the grain size of the beads can be seen. The dark color of the spheres is due to illumination conditions.

## MAIN PROPERTIES

Grain Size (Distribution):	1.00–1.25 mm
Purity:	> 97.5%
Material Density:	2500 kgm <sup>-3</sup>
Hardness:	≥ 6 Mohs scale
Volatility/Condensability:	solid
Thermal Conductivity:	1.129 Wm <sup>-1</sup> K <sup>-1</sup>
Refractive Index:	1.5188
Electric Permittivity:	N/A

## REFERENCES

[1] Sigmund Lindner GmbH. *SiLibeads Glass Beads, Type S*. 2019. URL: <https://www.sigmund-lindner.com/en/products/glass-beads/dispersing-beads/> (visited on 10/29/2019).

## ADDITIONAL IMAGES AND GRAPHS

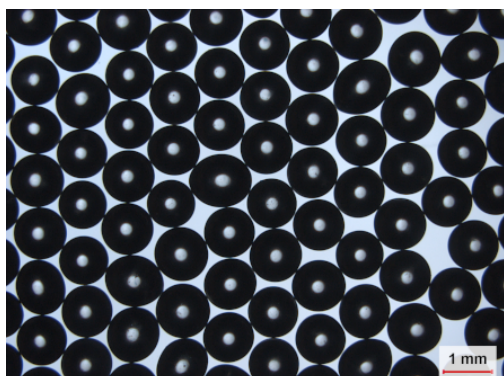


Figure 2: Glass beads (1.00–1.25 mm)

## MATERIAL IMAGE



Figure 1: SiLibeads Type S glass beads [1]

## PRODUCTION INFO

	Producer	Sigmund Lindner
	Production rate	N/A
	Purchase	N/A

## PROS & CONS

Cost	● ● ● ● ● ● ● ●
Availability	● ● ● ● ● ● ● ●
Production time	● ● ● ● ● ● ● ●

## HAZARDS

Non hazardous substance.

## CONTACT PERSON

Dr. Günter Kargl

✉ [guenter.kargl@oeaw.ac.at](mailto:guenter.kargl@oeaw.ac.at)

🏠 Austrian Academy of Sciences/IWF  
Schmiedlstraße 6  
A-8042 Graz